

CarnivalCapers Fantasy

WELCOME ABOARD!

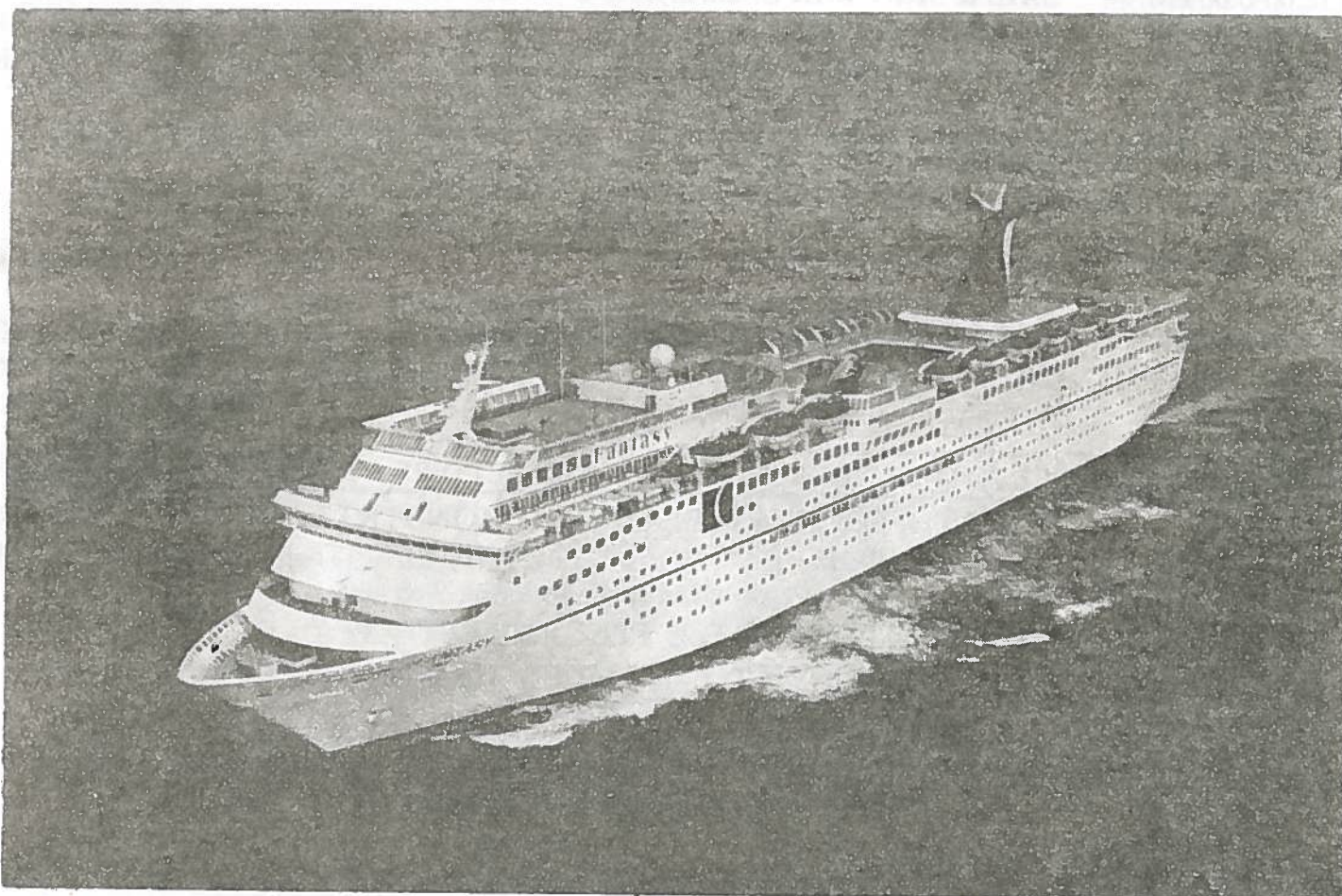
CAPTAIN: VITTORIO SARTORI

CRUISE DIRECTOR: JOHN HEALD

MONDAY, JULY 8, 1991

SUNSET 8:13 PM

ON BEHALF OF CARNIVAL CRUISE LINES, CAPTAIN SARTORI, HIS OFFICERS, STAFF & CREW, WE WOULD LIKE TO WELCOME YOU ABOARD THE M.S. FANTASY!



DUE TO SHIP SECURITY REQUIREMENTS ALL PASSENGERS MUST CARRY A PHOTO I.D. WITH THEM WHEN THEY GO ASHORE IN ALL PORTS!

THE CARNIVAL CAPERS ARE YOUR ON BOARD ACTIVITY AND PROGRAM GUIDE, DESIGNED TO GIVE YOU YOUR BEST VACATION EVER. THE CAPERS WILL BE DELIVERED TO YOUR CABIN EVERY EVENING BY YOUR CABIN STEWARD. ADDITIONAL COPIES ARE AVAILABLE AT THE TOUR DESK ON EMPRESS DECK. PLEASE TAKE A FEW MINUTES TO READ THE CAPERS, SO THAT YOU MAY BE INFORMED OF ALL THE EVENTS, ACTIVITIES AND SHOWS FOR THE CRUISE.

MEAL TIMES FOR TODAY

1:00-4:00 PM	DINING ROOM RESERVATION INQUIRIES	CRYSTAL LOUNGE
1:00-3:30 PM	SNACKS SERVED	WINDOWS ON THE SEA & POOLSIDE
6:00 PM	MAIN SITTING DINNER	CELEBRATION & JUBILEE DINING ROOMS
8:15 PM	LATE SITTING DINNER	CELEBRATION & JUBILEE DINING ROOMS
12:30-1:30 AM	LATE NIGHT BUFFET SERVED	CELEBRATION DINING ROOM
1:30-2:30 AM	MINI BUFFET SERVED	PROMENADE DECK
24 HOURS	COFFEE and TEA AVAILABLE	LIDO DECK ACROSS FROM POOL BAR

SHORE EXCURSIONS AND TOUR SALES

1:00-3:45PM & 6:30-9:00 PM

TOURS FOR FREEPORT & NASSAU!

INFORMATION SHEETS & TOUR ORDER FORMS AVAILABLE!

The tour office is located on Empress Deck Midship/Spectrum.
Tours are limited and will be sold on a first come first serve system.

12:00-6:00 PM	SAIL & SIGN BAR CREDIT CARD AVAILABLE	PROMENADE DECK
12:00-8:00 PM	NAUTICA SPA OPENS	SPORTS DECK FORWARD
12:00-4:00 PM	BEAUTY SALON APPOINTMENTS TAKEN	PROM DECK FORWARD
1:00- 4:00 PM	<i>VIDEO DIARY AND SNORKEL DESK OPENS</i>	<i>EMPRESS DECK</i>

PLAY the SHIPBOARD LOTTO and WIN UP TO \$50,000 !

Sales Booth Open From 12 NOON to BOATDRILL / AFTER BOATDRILL to 12 MIDNIGHT
Located On Promenade Deck Forward / Drawings are at 9:00 and 11:00 pm

1:00-4:00 PM	DEPARTURE PARTY	LIDO DECK
	ALL DAY DRINK SPECIAL "FUN SHIP SPECIAL" ONLY \$5.50	
1:00-3:00 PM	ELECTRICITY DISCO OPENS with D.J. "BEN"	PROMENADE DECK
1:00-4:00 PM	MUSIC WITH OUR CALYPSO BAND "SUN CRUISERS"	LIDO DECK STAGE
2:00 - 4:00 PM	LIVE MUSIC WITH "SCOTT"	PROMENADE DECK

DON'T FORGET TO MAIL YOUR POSTCARDS AND LETTERS AT THE PURSERS OFFICE

2:45 PM	HEALTH, FITNESS & BEAUTY DEMONSTRATION	UNIVERSE
3:00-4:00 PM	LIBRARY OPENS	PAVILLION- ATLANTIC DECK/SPECTRUM
	\$10.00 refundable deposit taken on all books checked out.	
4:00 PM	M/S FANTASY SAILS FOR FREEPORT!	
3:45-4:45PM	WAVE GOODBYE TO MIAMI FILMED BY THE VIDEO DIARY	

VERY IMPORTANT WELCOME ABOARD TRAVEL TALK VERY IMPORTANT

3:15 PM UNIVERSE LOUNGE

CRUISE DIRECTOR , ' JOHN HEALD ' WILL COVER INFORMATION ABOUT THE SHIP, CUSTOMS, SHOPPING, SHORE EXCURSIONS AND WHERE TO GO & WHAT DO IN THE BAHAMAS! THIS TALK WILL ANSWER ALL OF THE QUESTIONS THAT YOU MAY HAVE ABOUT THE CRUISE AND THE BAHAMAS. INFORMATION SHEETS WILL BE AVAILABLE AS YOU ENTER THE LOUNGE.

FIRE & LIFEBOAT DRILL

THE CONVENTION OF SAFETY OF LIFE AT SEA AND THE U.S. COAST GUARD MAKE THIS A COMMAND PERFORMANCE FOR ALL PASSENGERS AND CREW. PLEASE LISTEN FOR THE ANNOUNCEMENTS AND WEAR YOUR LIFEVEST TO THE MUSTER STATIONS.

CLUB 21 CASINO HOURS

FOLLOWING THE LIFEBOAT DRILL, THE CLUB 21 CASINO WILL BE OPEN. THE CASINO IS LOCATED ON PROMENADE DECK FORWARD. OUR CASINO FEATURES BLACKJACK, THE NEW OVER AND UNDER 13 GAME, DICE, ROULETTE, WHEEL OF FORTUNE, CARRIBEAN STUD POKER AND THE LOOSEST SLOTS AFLOAT! WIN TOP AWARD ON ANY SLOT MACHINE AND YOU WILL RECEIVE A JACKPOT WINNERS T - SHIRT! NO ONE UNDER 18 WILL BE PERMITTED. CAMERAS AND/OR PHOTOS ARE ALSO NOT PERMITTED

5:30 -6:15 PM	WELCOME ABOARD INTERVIEWS WITH THE VIDEO DIARY	OPEN DECKS
5:00 PM	CARDIO-FUNK LOW IMPACT AEROBICS (Minimum 5 persons)	AEROBIC STUDIO
7:00-10:30 PM	GIFT SHOPS OPEN ON ATLANTIC DECK	
7:15-8:00 PM	Complimentary Welcome Aboard Rum Swizzles! <i>This is the perfect chance to meet your fellow shipmates!</i>	
7:30-8:00 PM	JR. CRUISERS MEET YOUTH DIRECTORS!	PROMENADE DK
8:30-9:30 PM	DANCE TO THE BIG BAND SOUND	UNIVERSE LOUNGE
9:30-1:30 AM	ROCK THE NIGHT AWAY WITH "YIN YANG"!	CRYSTAL LOUNGE
9:30-1:00 AM	"SCOTT".PLAYS R + B MUSIC	PROMENADE DECK
9:30-1:00 AM	VISIT "JACK" AT THE SPINNING PIANO BAR	CLEOPATRA'S
9:30-1:00 AM	ENJOY MUSIC BY REQUEST WITH "REFLECTION"	CATS LOUNGE
9:45 - 10:30PM	SINGLES PARTY - FUN AND GAMES AND COMPLIMENTARY RUM SWIZZLE DRINKS,AND A CHANCE TO MEET NEW FRIENDS	
10:30-LATE	DANCING TILL LATE AS "D.J.BEN" KEEPS PUMPING UP THE JAM	DISCO

ENJOY THE BAR SPECIAL IN ALL LOUNGES ALL NIGHT- WHISKY SOUR ONLY \$2.50

9:30 PM JACKPOT BINGO! 9:30 PM

TONIGHT BEFORE THE SHOW WE WILL GIVE AWAY THOUSANDS OF DOLLARS
MINIMUM CASH PRIZE IS ALWAYS \$100



MINI JACKPOT GAMES INCLUDE MASSIVE CASH PRIZES, 14KT GOLD, AND FREE TOURS
ALSO TONIGHT WE WILL PLAY THE

\$1000 COVERALL GAME

10:30 PM ITS SHOWTIME IN THE UNIVERSE LOUNGE
PRESENTED BY YOUR CRUISE DIRECTOR JOHN HEALD
AND STARRING

DYNAMIC VOCALIST AND ENTERTAINER

TIA THOMPSON

PLUS WILD AND SPIFFING AUDIENCE PARTICIPATION

12:15 AM JOIN DOUG, BEN AND THE VIDEO DIARY FOR THE DANCE CONTEST DISCO

MIDNIGHT SPECIAL SHOW

12:15 AM IN THE *CRYSTAL LOUNGE*

THE SOUNDS OF CLASSIC ROCK

WITH

YIN YANG

DON'T MISS THIS.

DRESS FOR THE EVENING: *CASUAL*

IN CABIN T.V. CHANNELS: (1) "CRYSTAL PALACE" (2) MOVIE: "GREEN CARD"

MOVIE TIMES FOR (2) : 8:00 & 10:30 AM, 1:00, 3:30, 6:00, 8:30 & 11:00 PM, 1:30 & 4:00 AM

DON'T FORGET the SHIPBOARD LOTTERY PAYS BIG BUCKS!

TICKET SALES and DRAWINGS ARE *DAILY* SO CHECK YOUR CARNIVAL CAPERS

INFORMATION/PURSER'S DESK

OPEN TODAY FROM 12:00 NOON to 4PM & AFTER BOAT DRILL till 8PM

(EMPRESS DECK GRAND SPECTRUM)

PLEASE NOTE THAT THE PORT SIDE OF THE UNIVERSE & CRYSTAL LOUNGE IS NON-SMOKING!

THE VIDEO DIARY

DURING THE NEXT 4 DAYS WE WILL BE HAVING SOME
HILARIOUS ACTIVITIES AND EVENTS INVOLVING YOU.

THESE EVENTS WILL ALL BE FILMED BY THE VIDEO DIARY TEAM
AND THEN SHOWN ON YOUR CABIN T.V'S ON THE INFO CHANNEL.

EACH DAILY CASSETTE WILL FEATURE DIFFERENT EVENTS
AND ALSO AVAILABLE WILL BE AN EDITED VERSION FEATURING
EVERY SINGLE ACTIVITY, TOUR AND EVENT.

THE VIDEO DIARY DESK IS THE BEST SOUVENIR TO SHOW YOUR
FRIENDS WHAT A SPIFFING TIME YOU HAD ABOARD THE FANTASY

THE VIDEO DIARY DESK IS LOCATED ON THE EMPRESS DECK LOBBY

VIDEO DIARY RESERVATIONS AND SNORKELING EQUIPMENT AVAILABLE AT

MONDAY 6:30-9:00PM

TUESDAY 7:30-10:00AM & 4:00-10:00 PM

WEDNESDAY 7:00 - 11:00 AM & 4:30 - 10:00 PM

THURSDAY 9:00 AM - 10:00 PM

CarnivalCapers Fantasy

WELCOME TO FREEPORT, BAHAMAS!

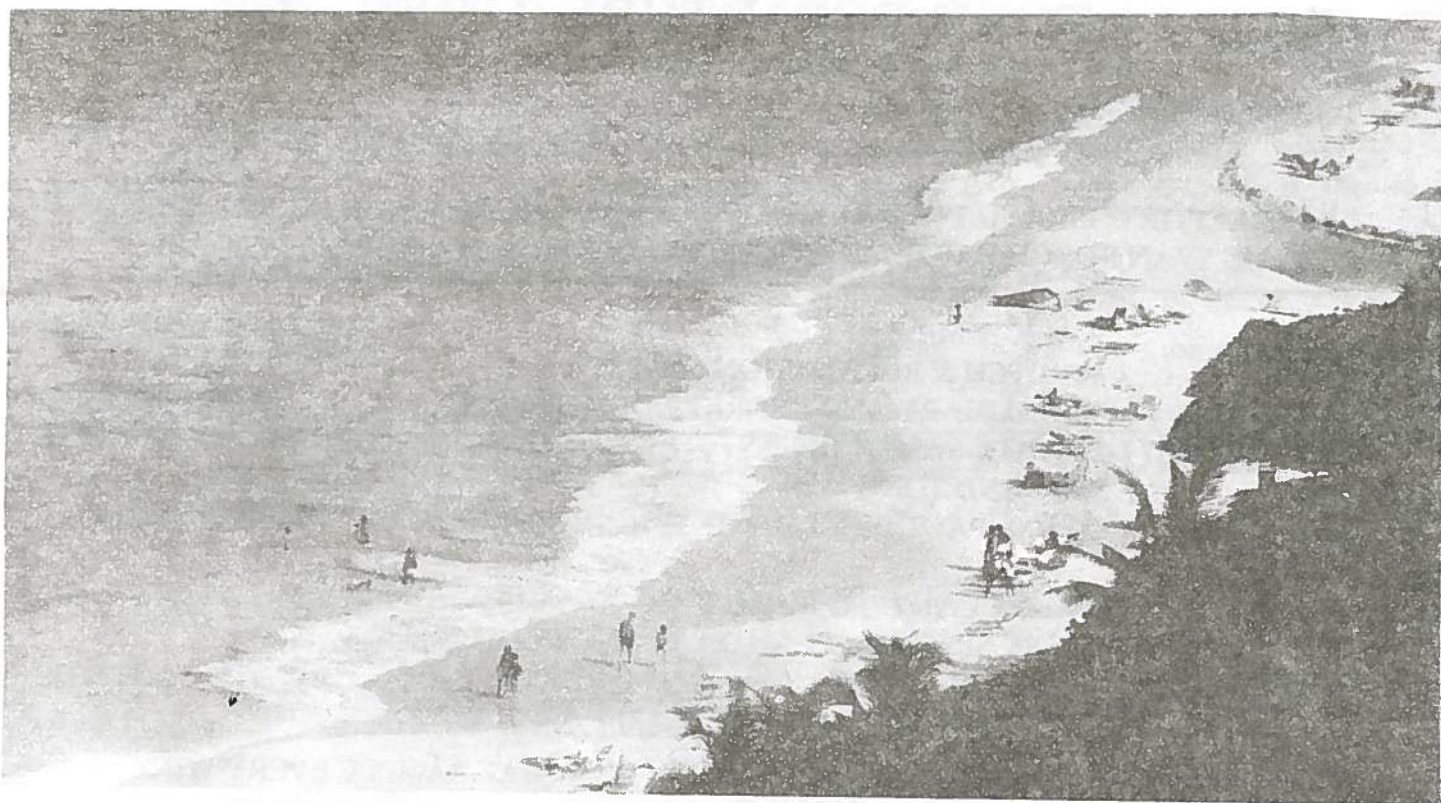
TUESDAY, JULY 9, 1991

SUNRISE: 6:28 AM

SUNSET: 8:08 PM

7:00 AM THE M/S FANTASY ARRIVES IN FREEPORT!

WHEN YOU GO ASHORE, YOU MUST CARRY YOUR BOARDING PASS WITH YOU!
IN CASE OF AN EMERGENCY ASHORE CONTACT: UNITED SHIPPING: (809) 352-9315 (6) (7)



DUE TO SHIP SECURITY REQUIREMENTS ALL PASSENGERS MUST CARRY THEIR BOARDING PASS AND PHOTO I.D. WITH THEM WHEN THEY GO ASHORE IN ALL PORTS!

SHORE EXCURSIONS AND TOUR SALES

7:30-9:30 AM TOUR OFFICE OPENS! TOUR DESK ON EMPRESS DECK/SPECTRUM
4:00-6:00 PM TOUR OFFICE OPENS! TOUR DESK ON EMPRESS DECK/SPECTRUM

"JUBILATION SHOW" NIGHTCLUB TOUR TICKETS AVAILABLE!
SEE INSIDE PROGRAM FOR ALL TOUR DEPARTURE TIMES

MEAL TIMES FOR TODAY

6:30 AM	COFFEE FOR THE EARLY RISERS	WINDOWS ON THE SEA & POOLSIDE
7:00 AM	MAIN SITTING BREAKFAST	BOTH DINING ROOMS
7:00-10:30 AM	LIGHT BREAKFAST SERVED	WINDOWS ON THE SEA & POOLSIDE
8:15 AM	LATE SITTING BREAKFAST	BOTH DINING ROOMS
10:30-11:30 AM	COFFEE, TEA & BOUILLON	WINDOWS ON THE SEA INSIDE
12:00-2:30 PM	LIGHT DECK LUNCHEON	WINDOWS ON THE SEA
12:00-2:00 PM	OPEN SITTING BUFFET LUNCH	CELEBRATION DINING ROOM
3:00 PM	SANDWICHES AND HAMBURGERS	INSIDE WINDOWS ON THE SEA
4:00-5:00 PM	COFFEE, TEA, ICE CREAM & TREATS	LIDO DECK & POOLSIDE
5:45 PM	FORMAL MAIN SITTING <i>ITALIAN</i> DINNER	BOTH DINING ROOMS
8:00 PM	FORMAL LATE SITTING <i>ITALIAN</i> DINNER	BOTH DINING ROOMS
11:30-12:15 AM	CELEBRATION DINING ROOM OPENS FOR PHOTOS OF THE GALA BUFFET!	
12:30- 1:30 AM	GRAND GALA BUFFET SERVED!	CELEBRATION DINING ROOM
11:45 - 1:00 AM	GRAND GALA BUFFET SERVED!	JUBILEE DINING ROOM
1:30-2:30 AM	MINI BUFFET SERVED	PROMENADE DECK
24 HOURS	COFFEE and TEA AVAILABLE	LIDO DECK ACROSS FROM POOL BAR

TOUR DEPARTURE TIMES

SNORKEL TOUR

MORNING TOUR MEETS IN THE UNIVERSE LOUNGE AT 8:45 AM
 AFTERNOON TOUR MEETS IN THE UNIVERSE LOUNGE AT 12:30 PM

FREEPORT ISLAND TOUR MEETS IN THE UNIVERSE LOUNGE AT 9:15 AM
 LUCAYAN BEACH PARTY MEETS IN THE UNIVERSE LOUNGE AT 9:00 AM

7:00 AM	WALK-A-MILE	MEETS ON SUN DECK
7:30 AM	STRETCH & RELAXATION CLASS	AEROBIC STUDIO
7:00 - 10:00 AM	VIDEO DIARY AND SNORKEL DESK OPENS	EMPRESS DECK
8:00 AM-8:00 PM	BEAUTY SALON OPENS	SPORTS DECK FORWARD
8:30 AM	SLIM AND TONE	AEROBIC STUDIO
9:00 AM	LOW IMPACT DYNA BAND AEROBICS (MIN 5)	AEROBIC STUDIO
1:00 PM	GREAT CALYPSO MUSIC! DRINK SPECIAL: "PLANTERS PUNCH" (2:30-5:00 PM)	LIDO DECK STAGE
2:00 PM	A TRIVIA QUIZ!	LIDO DECK STAGE
2:30 PM	PILLOW FIGHTING FANTASY STYLE	LIDO DECK
3:15-4:00 PM	WINE & CHEESE PARTY! YOU MAY SAMPLE EVERY WINE ON DISPLAY FOR A NOMINAL CHARGE OF ONLY \$3.00! CHEESE WILL BE SERVED COMPLIMENTARY	DISCO
4:00 PM	MULTI - IMPACT AEROBICS	AEROBIC STUDIO
4:00 PM	M/S/ FANTASY SAILS FOR NASSAU, BAHAMAS! PLEASE BE ON BOARD NO LATER THAN 3:30 PM!	

ASK THE PURSERS ABOUT THE **MESSAGE IN A BOTTLE**

8:30 - 10:00 PM SHIPBOARD LOTTO BOOTH OPEN! PROMENADE DK FWD
10:30 - 12:00 PM (DRAWING TIMES ARE: 9:00 and 11:00 PM)

CLUB 21 CASINO WILL OPEN SHORTLY AFTER SAILING!

CAPTAIN'S COCKTAIL PARTY

UNIVERSE LOUNGE

5:00 PM (1ST SITTING PARTY)

7:00 PM (2ND SITTING PARTY)

CAPTAIN VITTORIO SARTORI

CORDIALLY INVITES ALL PASSENGERS TO HIS FORMAL COCKTAIL PARTIES!
COMPLIMENTARY COCKTAILS & HORS D'OEUVRES WILL BE SERVED!
DANCE TO THE MUSIC OF "STEVE FALKNER" & THE UNIVERSE ORCHESTRA.



YOU MAY USE ALL ENTRANCES OF THE UNIVERSE LOUNGE.

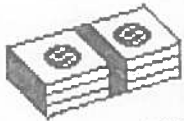
IF YOU WOULD LIKE TO MEET AND HAVE A PHOTO WITH THE CAPTAIN,
YOU MUST ENTER FROM THE ATLANTIC DECK, STARBOARD SIDE ENTRANCE.

DRESS FOR THE EVENING IS FORMAL

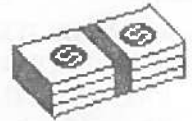
NOTE: THE UNIVERSE LOUNGE WILL NOT OPEN FOR THE FIRST SHOW UNTIL 8:00 PM

8:00 PM **JACKPOT BINGO!** 10:00 PM

JUST BEFORE EACH SHOW THIS EVENING, WE WILL PLAY ONE COVER-ALL GAME
OF BINGO, SOMEONE WILL WIN A JACKPOT WORTH



\$1000.00



THE MORE YOU PLAY THE MORE WE GIVE AWAY

UNIVERSE LOUNGE

CARDS ARE 3 FOR \$10.00!

UNIVERSE LOUNGE

SHOWTIME IN THE UNIVERSE LOUNGE

8:30 PM (MAIN SITTING)

10:30 PM (LATE SITTING)

LEONARD MILLER & GEORGE REICH PRESENT CARNIVAL'S

FANTASY FOLLIES

STARRING THE FABULOUS FANTASY DANCERS

THE ONE AND ONLY

ROBERT THE GREAT EXCELSIOR

ONE OF COMEDY'S NEW STARS FROM HBO

HAPPY COLE

RESERVE AN AVIS RENT A CAR AT THE PURSERS DESK FOR MIAMI

9:30-1:30 AM

"YIN YANG" PLAYS GREAT CLASSIC ROCK

CRYSTAL LOUNGE

9:30-1:00 AM

"JACK" PLAYS GREAT SING ALONG MUSIC

CLEOPATRA'S

9:30-1:00 AM

"SCOTT" PLAYS HIP RHYTHM AND BLUES

PROMENADE DECK

9:30-1:00 AM

"REFLECTION" PLAY MUSIC BY REQUEST

CATS LOUNGE

10:00-LATE

"D.J.BEN" PUMPS UP THE JAM

ELECTRICITY DISCO

MIDNIGHT SPECIAL SHOW

12:15AM

IN THE
CRYSTAL LOUNGE

SPICY ADULT COMEDY STARRING

HAPPY COLE

R RATED

R RATED

IN CABIN T.V. CHANNELS:

CHANNEL (1) "CRYSTAL PALACE" (CONTINUOUS SHOWING)

CHANNEL (2) MOVIE: "GHOST"

TIMES FOR CHANNEL (2): 8:00 & 10:30 AM, 1:00, 3:30, 6:00, 8:30 & 11:00 PM, 1:30 & 4:00 AM

"COLOMBIAN EMERALDS INTERNATIONAL"

PRECIOUS JEWELRY AND FINE TIME PIECES - THE BEST STORE ON THE ISLAND

THE WORLD'S LEADING EMERALD JEWELLER! STORES THROUGHOUT THE CARIBBEAN AND THE BAHAMAS. A FABULOUS COLLECTION OF EMERALDS, FINE GEMSTONE JEWELRY AND WATCHES. SIGNIFICANT SAVINGS OVER U.S. PRICES! SEE THE EXCELLENT ARTICLE IN "CURRENTS MAGAZINE" IN YOUR CABIN! ALL THE MERCHANDISE IS GUARANTEED. (LOOK FOR "INTERNATIONAL" IN THE NAME !)

ISLAND GALLERIA (SAVINGS OF 50%) OF STATE SIDE PRICES

EXCLUSIVE ROYAL DOULTON CHARACTER JUG CELEBRATING THE ANNIVERSARY OF CHRISTOPHER COLUMBUS, WHICH WILL BE CONSIDERED AS A COLLECTORS PIECE IN YEARS TO COME ALSO AVAILABLE, WEDGWOOD AND AYSLEY POTTERY

PARFUM de PARIS

ROMANTIC FRENCH PERFUMES AND COLOGNES

SAVE AS MUCH AS 40% OVER U.S. PRICES ON TRUE FRENCH FRAGRANCES, AS WELL AS, THE LARGEST SELECTION OF NAME BRAND PERFUMES IN FREEPORT! ALSO, AN EXTENSIVE COLLECTION OF UNIQUE FRAGRANCES MANUFACTURED IN THE BAHAMAS; SAND, PINK, PEARL and PARADISE !

CIRO

THE AFFORDABLE EXTRAVAGANCE IN QUALITY FASHION COSTUME JEWELRY AT 20% LESS THAN STATE SIDE PRICES!

LINENS OF LUCAYA

HAND - FINISHED LINENS SUCH AS BEAUTIFUL TABLECLOTHS, NAPKINS, HANDKERCHIEFS, CUSHION COVERS AND APRONS. ALSO, BLOUSES, DRESSES, KIMONOS, HAPPY COATS AND FUN CLOTHING!

OASIS

AS CLOSE TO DEPARTMENT STORE SHOPPING AS YOU WILL FIND IN FREEPORT. HERE YOU'LL FIND BARGAINS IN A NUMBER OF CATEGORIES LIKE: JEWELRY, WATCHES, PERFUME, COSMETICS AND NOTIONS!

LUCAYA KNITS

QUALITY PRIVATE LABEL KNITWEAR IN STRIKING COLOURS AT AFFORDABLE PRICES!

DON'T FORGET TO PLAY "CARNIVAL SWEEPSTAKES" WHILE SHOPPING!

CarnivalCapers Fantasy

WELCOME TO NASSAU, BAHAMAS!

SUNRISE: 6:35 AM WEDNESDAY, JULY 10, 1991 SUNSET: 8:14 PM

8:00 AM THE M/S FANTASY ARRIVES IN NASSAU!

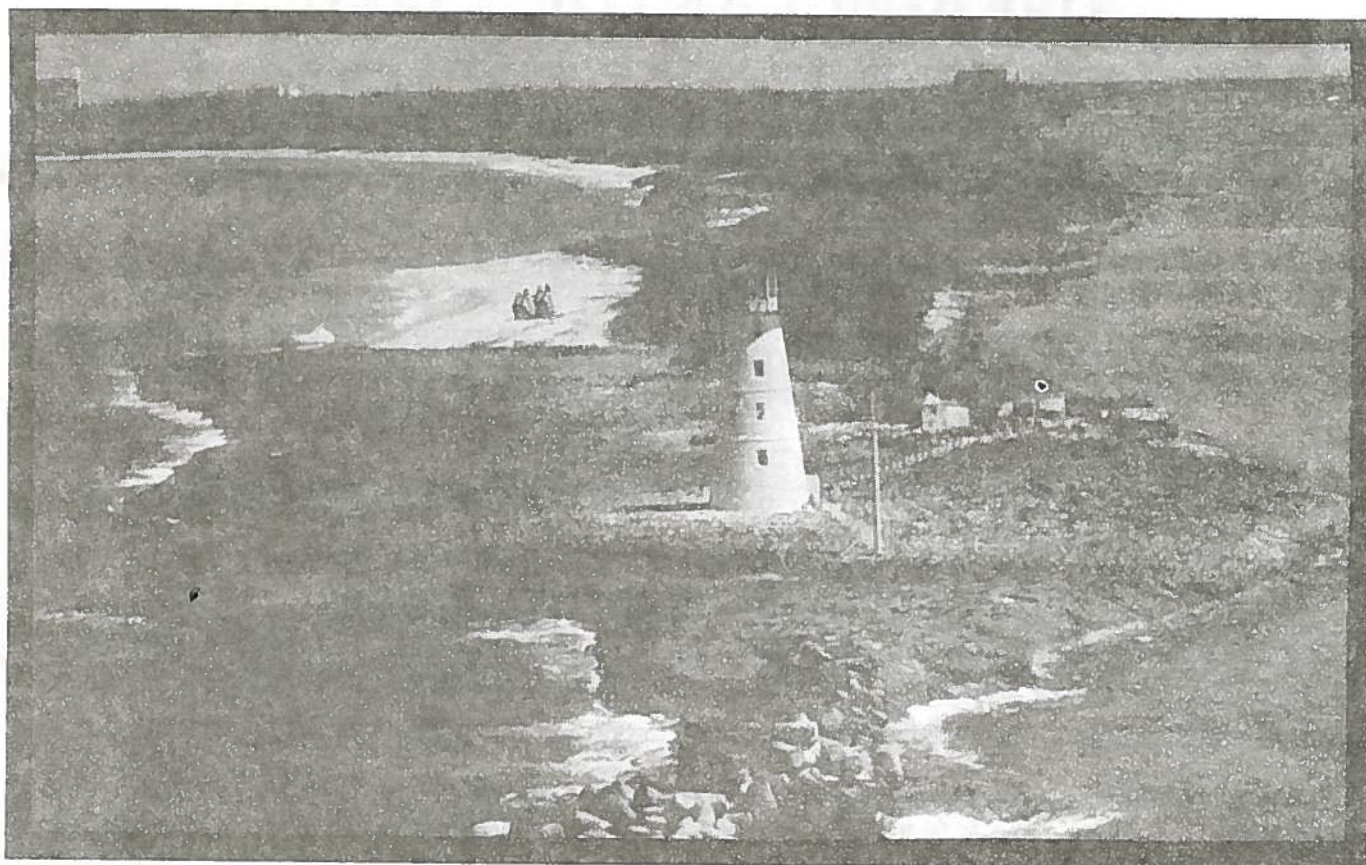
WHEN YOU GO ASHORE, YOU MUST CARRY YOUR BOARDING PASS WITH YOU!

THE SHIP WILL SAIL ON THURSDAY MORNING AT 8:00 AM.

YOU MUST BE BACK ON BOARD NO LATER THAN 7:30 AM THURSDAY MORNING!

IN CASE OF AN EMERGENCY ASHORE CONTACT:
CONTAINER TERMINALS LTD: 322-1012 OR 324-1072

THE GANGWAY TO DISEMBARK IS LOCATED ON DECK 3 FORWARD, ONE LEVEL BELOW RIVIERA DECK.
PLEASE LISTEN FOR ANNOUNCEMENTS CONCERNING CLEARANCE OF THE SHIP.



**DUE TO SHIP SECURITY REQUIREMENTS ALL PASSENGERS MUST CARRY
A PHOTO I.D. WITH THEM WHEN THEY GO ASHORE IN ALL PORTS!**

7:30-9:30 AM SHORE EXCURSIONS and TOUR SALES

THE TOUR DESK ON EMPRESS DECK IN THE GRAND SPECTRUM
TICKETS FOR THE "JUBILATION SHOW" AT THE CRYSTAL PALACE AVAILABLE AT THE
PURSER'S OFFICE ON EMPRESS DECK/SPECTRUM FROM 10:00 AM- 8:00 PM.

MEAL TIMES FOR TODAY

6:30 AM	COFFEE FOR THE EARLY RISERS	WINDOWS ON THE SEA & POOLSIDE
7:00 AM	MAIN SITTING BREAKFAST	BOTH DINING ROOMS
7:00-10:30 AM	LIGHT BREAKFAST SERVED	WINDOWS ON THE SEA & POOLSIDE
8:15 AM	LATE SITTING BREAKFAST	BOTH DINING ROOMS
10:30-11:30 AM	COFFEE, TEA & BOUILLON	WINDOWS ON THE SEA
12:00-2:30 PM	LIGHT DECK LUNCH	WINDOWS ON THE SEA AND POOLSIDE
12:00-2:00 PM	OPEN SITTING LUNCH FOR ALL PASSENGERS	
		CELEBRATION & JUBILEE DINING ROOMS
4:00-5:00 PM	COFFEE, TEA, ICE CREAM & SANDWICHES	
		WINDOWS ON THE SEA & POOLSIDE
5:45 PM	MAIN SITTING GALA DINNER	BOTH DINING ROOMS
8:00 PM	LATE SITTING GALA DINNER	BOTH DINING ROOMS
12:00-2:00 AM	MEXICAN BUFFET	LIDO DECK
24 HOURS	COFFEE & TEA AVAILABLE	LIDO DECK ACROSS FROM POOL BAR

TOUR DEPARTURE TIMES

PLEASE BE ON TIME FOR YOUR TOUR!

NASSAU HIGHLIGHT TOUR: DEPARTS VIA GANGWAY ON DECK 3 FROM 8:30-9:30 AM.

TROPICBIRD BOAT TOUR: TOUR MEETS IN THE UNIVERSE LOUNGE AT 1:00 PM.

SNORKEL TOUR: AM TOUR MEETS IN THE UNIVERSE LOUNGE AT 9:00 AM.

PM TOUR MEETS IN THE UNIVERSE LOUNGE AT 1:15 PM.

CORAL WORLD TOUR: AM TOUR MEETS IN THE UNIVERSE LOUNGE AT 9:15 AM.

PM TOUR MEETS IN THE UNIVERSE LOUNGE AT 1:15 PM.

DISCOVERY ISLAND BEACH PARTY: MEETS IN THE UNIVERSE LOUNGE AT 9:30 AM.

CABLE BEACH GOLF & TENNIS TOURS: CHECK TIMES AT THE PURSER'S OFFICE
UPON ARRIVAL IN NASSAU.

GLASS BOTTOM BOAT TOUR: MEETS IN UNIVERSE LOUNGE AT 10:45 AM and 1 & 3 PM

SCUBA DIVING TOUR: MEETS IN THE UNIVERSE LOUNGE AT 9:00 AM and 1:15 PM


"JUBILATION" NIGHTCLUB SHOW!:

FIRST SHOW (9:00 PM) DEPARTS VIA GANGWAY ON DECK 3 FROM 7:30-8:00 PM.

SECOND SHOW (11:00 PM) DEPARTS VIA GANGWAY ON DECK 3 FROM 9:45-10:15 PM.

7:00 AM-8:00 PM	NAUTICA SPA & GYMNASIUM OPENS	SPORTS DECK FORWARD
7:00 AM	WALK-A-MILE	MEETS ON SUN DECK
7:30 AM	STRETCH & RELAXATION CLASS	AEROBIC STUDIO
7:30 AM-11:00AM	VIDEO DIARY AND SNORKEL DESK OPENS	EMPRESS DECK
8:30 AM	SLIM AND TONE	AEROBIC STUDIO
9:00 AM	LOW IMPACT DYNA BAND AEROBICS	AEROBIC STUDIO
1:00-3:00 PM	CALYPSO MUSIC WITH "SUN CRUISERS"!	LIDO DECK STAGE
3:00 PM	TRIVIA QUIZ!	LIDO DECK STAGE
4:00 PM	MULTI - IMPACT AEROBICS (Minimum 5 persons)	AEROBIC STUDIO

THE SHIPBOARD "LOTTO" YOU CAN'T WIN IT UNLESS YOU'RE IN IT!
TICKET SALES TODAY FROM 4:00 to 9:00 PM / DRAWINGS AT 6:00 & 8:00PM

4:30 - 10:00 PM	VIDEO DIARY DESK REOPENS	EMPRESS DECK
5:00 - 9:00 PM	PHOTO GALLERY is OPEN	EMPRESS DECK
8:00 - 10:30 PM	"SCOTT" ROCKS PROMENADE	PROMENADE DECK
9:15 PM	BALLROOM DANCE CLASS	UNIVERSE LOUNGE
9:30 - 11:00 PM	LIDO DECK SWIMMING POOL IS OPEN FOR A RELAXING SWIM UNDER THE STARS	
9:15 - 11:00PM	PIANO ENTERTAINMENT WITH "MURRAY" INCLUDING A GOOD OLD FASHIONED SING ALONG AT 10:00 PM	CLEOPATRA'S

10:00 - MIDNITE THE SOUNDS OF CALYPSO WITH "SUN CRUISERS" LIDO DECK

AND THEN JOIN YOUR CRUISE DIRECTOR "JOHN" FOR ONE OF THE BEST EVENTS OF THE ENTIRE CRUISE.

LIDO DECK PARTY!
ITS 50'S AND 60'S NIGHT
FEATURING AT 12:30 AM THE
HILARIOUS
LIP SYNC CONTEST
AND A HUGE MEXICAN BUFFET!

THE FUN AND FOOD STARTS AT MIDNIGHT !!
BAR SPECIAL! The Great "BAHAMA MAMA" FOR ONLY \$2.50!

IN CABIN T.V. CHANNELS:

CHANNEL (1) "CRYSTAL PALACE" (TILL 8 PM)

MOVIE: "DANCES WITH WOLVES" CHANNEL (2)

TIMES: 8:00 & 11:30 AM, - 3:00, 6:30, 10:00 PM, - 1:30, 5:00 AM

DRESS FOR THE EVENING: CASUAL

**NOTE: THE SHOPS and CASINO ON BOARD ARE CLOSED
IN PORT DUE TO LOCAL LAW!**

RESERVE YOUR **AVIS RENT A CAR** AT THE PURSERS OFFICE FOR MIAMI

The Perfect Way To Spend Your Evening In Nassau...
THE CRYSTAL PALACE RESORT & CASINO

Presents

"JUBILATION"

The most exciting show in the Bahamas! Beautiful dancers, sophisticated comedy, high-powered vocalist and master illusionist Dirk Arthur, who performs with a jaguar, black panther leopard and a rare breed of blue-eyed bengal tigers!

TICKETS AVAILABLE AT THE PURSER/INFORMATION DESK TODAY UNTIL 8:00 PM!
DON'T MISS THIS SHOW!

DUE TO A NATIONAL HOLIDAY ALL STORES IN NASSAU WILL BE CLOSED.
HOWEVER, DON'T PANIC HERE ARE SOME BARGAINS TO LOOK FORWARD TO
TOMORROW IN OUR **GIFT SHOPS ON BOARD**

Beautiful Brazilian Gem Stones

Sparkling Blue Topaz, Citrine and Amethyst all calibrated for standard settings at an amazing \$10.00 per carat. Don't miss These **OUTSTANDING** treasures !

Other Great Specials

25 % off all New Designs of **Gucci** Purses

25 % off **Sergio Tacchini** Sportswear

50 % off **Missoni** Men Wear

Tennis Bracelets "Cubic Zirconia" from \$59.00

Fabulous Prices on **Fendi**, **Gucci**, and **Seiko** Watches

50 % Off Laurana Italian Costume Jewellery

FREE "FINLANDIA VODKA" WITH LIQUOR PURCHASES OVER \$30.00

AND OF COURSE MAKE SURE YOU SEE THE "FANTASY" LOGO

T SHIRTS, SWEAT SHIRTS, TOWELS AND MUCH MUCH MORE!

FOR THE KIDS - 20% OFF ALL HAND HELD VIDEO GAMES.

EVEN GREATER SAVINGS AVAILABLE IF YOU BRING YOUR COUPON BOOK.

ENJOY GREAT SHOPPING ON BOARD TOMORROW

TO MUCH SUN ? THEN CALL 2009 FOR A REJUVINATING FACIAL MASSAGE

CarnivalCapers Fantasy

ENJOY A SPIFFING DAY AT SEA !

SUNRISE: 6:32AM THURSDAY, JULY 11, 1991

SUNSET: 8:09PM



MEAL TIMES FOR TODAY

6:30 AM	COFFEE FOR THE EARLY RISERS	WINDOWS ON THE SEA & POOLSIDE
7:45 AM	MAIN SITTING BREAKFAST	BOTH DINING ROOMS
8:00-10:00 AM	LIGHT BREAKFAST SERVED	WINDOWS ON THE SEA & POOLSIDE
9:00 AM	LATE SITTING BREAKFAST	BOTH DINING ROOMS
10:30-11:30 AM	COFFEE, TEA & BOUILLON	WINDOWS ON THE SEA
12:00-2:30 PM	SALAD BAR OPEN	WINDOWS ON THE SEA
12:00-2:30 PM	LIGHT DECK LUNCHEON	WINDOWS ON THE SEA & POOLSIDE
12:00 NOON	MAIN SITTING LUNCH	BOTH DINING ROOMS
1:30 PM	LATE SITTING LUNCH	BOTH DINING ROOMS
4:00-5:00 PM	TEA TIME!	MAJESTIC LOUNGE
4:00-5:00 PM	COFFEE, TEA, ICE CREAM & TREATS	WINDOWS ON THE SEA & POOLSIDE
5:45 PM	MAIN SITTING AMERICAN DINNER	BOTH DINING ROOMS
8:15 PM	LATE SITTING AMERICAN DINNER	BOTH DINING ROOMS
12:30-1:30 AM	LATE NIGHT PASTA BUFFET SERVED	CELEBRATION DINING ROOM
1:30-2:30 AM	MINI BUFFET SERVED	PROMENADE DECK
24 HOURS	COFFEE and TEA AVAILABLE	LIDO DECK ACROSS FROM POOL.

7:00 AM-8:00 PM	NAUTICA SPA GYMNASIUM OPENS	SPORTS DECK FORWARD
7:00 AM	WALK-A-MILE	MEETS ON SUN DECK
7:30 AM	STRETCH & RELAXATION	AEROBIC STUDIO
8:00 AM-10:00 PM	BEAUTY SALON OPENS <i>Like to look your best? Then let a Nautica Spa Hair Stylist help you. Today only, they will give you 15% off of all coloring & permanent waving services. Imagine, soft highlights to compliment your tan! If your friends could see you now! Phone-2009</i>	SPORTS DECK FWD
8:00 AM-LATE	SLOT! (Win top award on any machine with maximum amount of coins played & you will receive a Jack Pot Winners T-shirt)	P-DECK
8:30 AM	LOW IMPACT AEROBICS	AEROBIC STUDIO
8:30 AM - 10:00PM	VIDEO DIARY DESK OPENS	EMPRESS DECK
9:00-10:30 PM	GIFT SHOPS OPEN! (CLOSED 12:30 -1:30 PM & 6 -7 PM)	ATLANTIC DECK FWD
9:30 AM	DYNABAND CALISTHENICS	AEROBIC STUDIO
9:30 AM	CHARTED SHIPS MAP AND COURSE ONLY \$5.00	PURSERS OFFICE
9:30-10:30 AM	LIBRARY OPENS	PAVILLION A-DECK/SPECTRUM
10:00 AM-LATE	FULL CASINO OPENS!	CLUB 21 CASINO
10:00 AM	SEX, LOVE AND ROMANCE TRIVIA QUIZ	UNIVERSE LOUNGE
10:00 AM	PING PONG TOURNAMENT! Sign up 10:00-10:15!	VERANDAH DECK FWD
10:15 AM	BEAUTY AND SKIN CARE DEMO	CATS LOUNGE
10:15 AM	TRAPSHOOTING - \$5.00 FOR 5 SHOTS	PROMENADE AFT
10:30 AM	AQUA AEROBICS	LIDO DECK POOL AFT
10:30 AM	HORSERACING!	UNIVERSE LOUNGE

11:15 AM DEBARKATION TALK!

UNIVERSE LOUNGE

This is an important meeting for all passengers concerning disembarkation procedures, customs rules and regulations, baggage handling, tips and gratuities, comment cards, etc. This talk will answer all your questions and is a must for all passengers.

12:00 NOON

CAPTAIN'S BULLETIN FROM THE BRIDGE!

1:00 PM

TRAPSHOOTING 5 SHOTS FOR \$5.00 GOOD LUCK ! PROMENADE AFT

1:00 PM

TALENT SHOW REGISTRATION TOUR DESK ON EMPRESS DECK

Please note that we can only sign up 8 acts. We try to arrange a show that has variety and will please everyone. Thank you for your understanding.

1:15 PM

ICE CARVING DEMONSTRATION

LIDO DECK

1:45 PM JOIN YOUR CRUISE DIRECTOR JOHN FOR SOME SPIFFING FUN

THE MEN'S HAIRY CHEST CONTEST LIDO STAGE

THE BEER DRINKING CONTEST LIDO STAGE

2:15 PM HELEN HOSTS THE GRANDPARENTS AND HONEYMOONERS PARTY

What are the advices of the Grandparents to the Honeymooners ?

2:45 PM JOIN JOHN FOR A SPIFFING EVENT

THE NEWLY WED AND NOT SO NEWLY WED GAME

ONE OF THE BEST AND SPIFFIEST EVENTS OF THE CRUISE !

3:15 JACKPOT MEGA BINGO - THOUSANDS OF DOLLARS WILL BE GIVEN AWAY - - -ALSO PLEASE BRING YOUR RAFFLE TICKETS FROM FREEPORT, WE WILL DRAW FOR SOME GREAT PRIZES.

ALL IN THE UNIVERSE LOUNGE

3:00 PM LOW IMPACT AEROBICS

4:00PM MULTI IMPACT AEROBICS

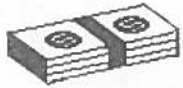
AEROBIC STUDIO S DECK

4:00 - 5:00 PM TEA TIME MAJESTIC BAR
 4:00 PM GALLEY TOUR! MEETS IN THE CELEBRATION DINING ROOM
 4:00 - 6:00 PM "LOTTO" BOOTH OPEN PROMENADE DECK FWD

4:15 PM THE PASSENGER TALENT SHOW!
 PRESENTED by YOUR CRUISE DIRECTOR and HOST, JOHN HEALD

FOLLOWED BY THE "MALE NIGHTGOWN CONTEST"! UNIVERSE
 CONTESTANTS MEET IN COSTUME IN THE GAME ROOM ON ATLANTIC DK AT 4:30 PM

5:00-6:00 PM LIBRARY OPENS: PLEASE RETURN ALL BOOKS A-DECK / SPECTRUM
 5:00-6:00 PM "FUNSHIP PARTY"! COMPLIMENTARY HORS D' OEUVRES!
 & PARTIES FEATURE \$2.50 DRINKS! (EXCLUDING FUNSHIP SPECIAL)
 7:00-8:00 PM plus, GREAT MUSIC and SONG with "SCOTT" PROMENADE



JACKPOT BINGO!



8:00 PM (MAIN SITTING)

10:00 PM (LATE SITTING)

Just before each show this evening, we will be playing the
Super Snowball Game GUARANTEEING \$1000.00!
WHO WILL WIN THE BIG BUCKS ?

3 CARDS FOR \$10.00 ! UNIVERSE LOUNGE 3 CARDS FOR \$10.00 !

SHOWTIME IN THE UNIVERSE LOUNGE

8:30 PM (MAIN SITTING SHOW)

10:30 PM (LATE SITTING SHOW)

LEONARD MILLER and GEORGE REICH PRESENT CARNIVAL'S

"BEST OF BROADWAY"

STARRING THE FABULOUS

"Fantasy Dancers"!

Vocalists **"KATIE O'LEARY" & "MATTHEW DULIAN"**

STEVE FALKNER and the Universe Orchestra

8:30 - 12 MID SHIPBOARD "LOTTO" BOOTH IS OPEN PROMENADE DK FWD
 9:30-1:00 AM DANCE THE NIGHT AWAY WITH "REFLECTION" CATS LOUNGE
 9:30-1:00 AM "SCOTT" PLAYS MORE HIP RHYTHM AND BLUES PROMENADE
 9:30-1:30 AM "JACK" PLAYS EASY LISTENING CLEOPATRA'S
 10:00 PM DISCO OPENS with D.J. "BEN" ELECTRICITY DISCO
 10:00-12:00 AM "YIN YANG" ROCKS THE NIGHT AWAY CRYSTAL LOUNGE

BRAZILIAN GEM STONES ! BLUE TOPAZ, AMETHYST & CYTRINE
JUST \$10.00 PER CARAT! ON DISPLAY AT 2 PM / GIFT SHOP ATLANTIC DECK

"LOTTO" DRAWINGS ARE AT: 12:30 - 2:30 - 9:00 and 11:00PM

MIDNIGHT SPECIAL SHOW
12:15 IN THE CRYSTAL LOUNGE

MORE DYNAMIC ENTERTAINMENT
WITH
TIA THOMPSON

THE LAST SHOW OF THE CRUISE, DONT MISS IT !

TIPS & GRATUITIES

CABIN STEWARD: \$3.00 PER DAY PER PERSON
DINING ROOM WAITER: \$3.00 PER DAY PER PERSON
DINING ROOM BUSBOY: \$1.50 PER DAY PER PERSON
MAITRE'D & HEAD WAITERS TIPPED AT YOUR DISCRETION.

BREAKFAST TOMORROW MORNING

7:00 AM (MAIN SITTING) 8:15 AM (LATE SITTING)
6:30-8:30 AM CONTINENTAL BREAKFAST SERVED ON LIDO DECK
PLEASE NOTE: NO ROOM SERVICE AFTER 4:00 AM. THANK YOU.

BAGGAGE HANDLING

PLEASE PLACE YOUR LUGGAGE OUTSIDE YOUR CABIN DOOR THIS EVENING
ANYTIME BETWEEN 6:00 PM & 1:00 AM.

SAIL & SIGN CREDIT CARD

NOTE: YOU DO NOT SETTLE YOUR ACCOUNT ON BOARD.
A STATEMENT WILL BE MAILED TO YOU CONCERNING YOUR BILL. THANK YOU.
THE PHOTO GALLERY WILL BE OPEN BETWEEN 7:00-9:30AM ON FRIDAY

IMPORTANT INFORMATION

PLEASE READ THIS VERY IMPORTANT INFORMATION TO WIN \$100

Your cabin steward will give you a comment sheet. We would appreciate very much if every passenger would take the time to fill out this very important questionnaire. When you read the Comment Sheet, you will note that there are four rating categories you may select. (Excellent, Good, Fair or Poor) We know that you have enjoyed all the services provided; Entertainment on stage in the Universe & Crystal Lounge, Shipboard activities, Cabin Service, Meals, etc. The rating category you choose should be based on the general performance of that department. Please keep this in mind: Please do not let one incident, person, show, joke, song, or any little thing that might have happened in a particular department affect you in rating the context of that category. We would appreciate very much if you would write a short note of explanation in the space provided. If you would like to praise someone who helped make your cruise more enjoyable, please do so. When you've finished filling out the sheet, please drop it in one of the boxes located outside the dining rooms. Tomorrow morning, you will be eligible to win the \$100.00 cash prize, just for completing this sheet and turning it on board before you go ashore!

DRESS FOR THE EVENING: **CASUAL**

IN CABIN T.V. CHANNELS: (1) "THE WORLD OF CARNIVAL" TIMES: CONTINUOUS (2) "HOME ALONE"

TIMES: 8:00 & 10:30 AM, 1:00, 3:30, 6:00, 8:30 & 11:00 PM, 1:30 & 4:00 AM

PLEASE FEEL FREE TO TAKE YOUR COPY OF "CARNIVAL CURRENTS" HOME WITH YOU

NOTE: DUE TO PROCESSING OF ACCOUNTS, NO SAIL & SIGN CHARGES AFTER 2:00 AM.

AVIS RENTAL CARS: RESERVATIONS CAN BE MADE AT THE INFORMATION DESK.

FACES YOU'LL FLIP FOR AT MIAMI SEAQUARIUM! COME FACE TO FACE WITH THE ROMANCE OF THE SEA. ENJOY THE THRILLING PERFORMANCE OF LOLITA, THE KILLER WHALE, T.V. STAR FLIPPER AND SALTY THE SEA LION. HAND FEED EXOTIC BIRDS, STINGRAYS AND SEA LIONS. TOUCH A STARFISH AT THE NEW "LIFE ON THE EDGE" EXHIBIT. ALL THESE AND MORE EXCITING FACES YOU'LL FLIP FOR AWAIT YOU AT MIAMI SEAQUARIUM, JUST 10 MINUTES FROM THE PORT OF MIAMI ON KEY BISCAINE. MIAMI SEAQUARIUM TICKETS AVAILABLE AT THE INFORMATION DESK ON E-DECK. IF YOU HAVE FLIGHTS AFTER 4:00 PM, YOU MAY GO ON THIS TOUR. AFTER THE TOUR YOU WILL ARRIVE AT THE MIAMI INTERNATIONAL AIRPORT AT 3:00 PM, SO THAT YOU MAY CHECK IN FOR FLIGHTS AFTER 4:00 PM.